



## Fluidwell reference guide



*Find the right Fluidwell for your application*

**Fluidwell has a diverse portfolio of nearly 70 different products, but what product is the perfect fit for your application?**

To support your selection, we have created this new reference guide. Each product group is explained with a list of typical features, photos and display examples. With a clear table overview you can easily compare the various options of the products.

Flow rate Indicators / Totalizers:	Page 2
Flow Computers:	Page 4
Batch Controllers:	Page 5
Process Controllers:	Page 6
General Purpose Displays:	Page 7
Level Indicators:	Page 8
Temperature Indicators:	Page 9
Pressure Indicators:	Page 10
Product Series:	Page 11

# Flow rate Indicators / Totalizers

The product group “Flow rate Indicators / Totalizers” offers an extensive range of solutions from a basic transmitter / totalizer up to a powerful flow rate monitor with flow curve linearization, flow rate monitoring, signal transmission, alarm and pulse outputs as well as Modbus or HART communication.

## Basic features

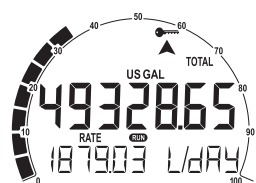
- ☑ Key information at a glance, simultaneously showing flow rate, total and measuring units.
- ☑ Clear operator messages e.g. “low rate” or “alarm lo”.
- ☑ “Know one, know them all” configuration structure, saving time, cost and aggravation.
- ☑ Flow rate measuring units: mL, L, m³, mg, g, kg, ton, GAL, bbl, lb, cf, REV, scf, Nm³, NL, P or no unit. The flow rate can be calculated per sec, min, hour or day.
- ☑ The resettable total measuring units: mL, L, m³, GAL, USGAL, kg, lb, bbl or no unit.
- ☑ Accumulated total is displayed with the same measuring units as total.
- ☑ The trend indication shows an increase or decrease of the actual flow rate.
- ☑ Ability to process all types of flow meter signals.
- ☑ Robust enclosures, resistant to harsh weather conditions.
- ☑ Suitable for a wide range of applications with diverse mounting possibilities: walls, pipes, panels or directly onto outdoor sensors.
- ☑ LED backlight ensuring perfect readings in all lighting conditions.

## Advanced Features

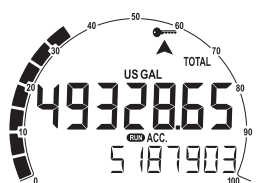
- ☑ Linearization of the flow curve for accuracy in any flow range.
- ☑ Flow rate re-transmission, is offered with the analog output.
- ☑ Accumulated total re-transmission, is offered with the scaled pulse output.
- ☑ Flow rate monitoring with high/low flow rate alarm values and (multiple) digital alarm outputs.
- ☑ Red flashing backlight in case of an alarm situation.
- ☑ HART Communication allows you to easily communicate with smart “DD enabled host” systems.
- ☑ Modbus Communication.
- ☑ Data logging: Logged frequently, read out easily! With free downloadable software tool.
- ☑ Suitable for hazardous area applications with intrinsically safe and explosion proof approvals.
- ☑ Remote input to reset total.
- ☑ Piegraph or speedometer as graphical indication of the flow rate.
- ☑ USB communication for remote configuration and data log extraction.
- ☑ Easy configurable via a pc with free downloadable software.



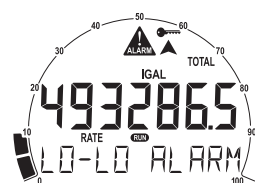
E-Series: Explosion proof Totalizers



Total and flow rate  
All E-Series



Total and accumulated total  
All E-Series



Alarm message (E018)



F-Series: Robust field mount Indicators



Total and flow rate  
Most F-Series



Total and accumulated total  
Most F-Series



Alarm message  
(F013, F018, F113, F117, F118)



D-Series: DIN Panel mount Indicators



Total and flow rate  
Most D-Series



Total and accumulated total  
Most D-Series



Alarm message (D013)

		Flow rate Indicators / Totalizers																							
		Do10	Do11	Do12	Do13	Do14	Do16	Eo18	E10	E12	Fo10	Fo11	Fo12	Fo13	Fo14	Fo16	Fo18	F110	F111	F112	F113	F115	F117	F118	
Flow Input	(o)4-20mA Input	•	•	•	•	•			•	•	•	•	•	•	•			•	•	•	•			•	
	Pulse Input	•	•	•	•	•	•	•	•	•	•	•	•	•	•	•	•	•	•	•	•	•	•	•	
	0 - 10V DC Input	•	•	•	•	•			•	•	•	•	•	•	•			•	•	•	•			•	
Display	Actual flow rate	•		•	•	•	•	•	•	•	•		•	•	•	•	•	•	•	•	•	•	•	•	
	Actual total (resettable)		•	•	•	•	•	•	•	•		•	•	•	•	•	•	•	•	•	•	•	•	•	
	Accumulated total (non-resettable)		•	•	•	•	•	•	•	•		•	•	•	•	•	•	•	•	•	•	•	•	•	
	Simultaneous flow rate and total			•	•	•	•	•	•	•			•	•	•	•	•	•	•	•	•	•		•	
	LED backlight	•	•	•	•	•	•	•	•	•	•	•	•	•	•	•	•	•	•	•	•	•	•	•	
	Red flashing backlight				•			•						•			•								
Analog	According to flow rate							•	•	•							•	•		•	•	•	•	•	
	According to Total / Preset																					•			
Digital output	Pulse output					•	•	•	•	•					•	•	•	•	•	•	•	•		•	
	Alarm output				•			•					•				•				•		•	•	
	Multiple outputs							•											•		•	•		•	
Mounting	Panel	•	•	•	•	•	•				•	•	•	•	•	•	•	•	•	•	•	•	•	•	
	Field / wall / pipe							•	•	•	•	•	•	•	•	•	•	•	•	•	•	•	•	•	
	Direct on flowmeter							•	•	•	•	•	•	•	•	•	•	•	•	•	•	•	•	•	
Hazardous	Safe area	•	•	•	•	•	•				•	•	•	•	•	•	•	•	•	•	•	•	•	•	
	Intrinsically safe										•	•	•	•	•	•	•	•	•	•	•	•	•	•	
	Explosion proof - Rugged 15 Kg enclosure										•	•	•	•	•	•		•	•	•	•	•	•	•	
	Explosion proof - touch through glass							•	•	•															
Other	Linearization						•	•		•						•	•			•				•	
	Dual flow inputs																		•			•	•		
	External reset total							•	•	•								•		•	•				
	Modbus communication								•	•								•	•	•	•	•	•	•	
	HART communication							•									•								
	Datalogging								•	•															

## Flow Computers

		Flow Computers											
		Do16	Eo18	E112	Fo16	Fo18	F112	F114	F116	F118	F126-EL	F126-EG	F127
Flow Inputs	(o)4-20mA Input			•			•	•	•	•	•	•	
	Pulse Input	•	•	•	•	•	•	•	•	•	•	•	•
	0 - 10V DC Input			•			•	•	•	•	•	•	
Display	Actual flow rate	•	•	•	•	•	•	•	•	•	•	•	•
	Actual total (resettable)	•	•	•	•	•	•	•	•	•	•	•	•
	Accumulated total (non-resettable)	•	•	•	•	•	•	•	•	•	•	•	•
	Simultaneous flow rate and total	•	•	•	•	•	•	•	•	•	•	•	•
	LED backlight	•	•	•	•	•	•	•	•	•	•	•	•
	Red flashing backlight		•			•							
Analog	According to (compensated) flow rate		•	•		•	•	•	•	•	•	•	•
	According to ratio							•					
Digital output	Pulse output	•	•	•	•	•	•		•	•	•	•	•
	Alarm output		•			•		•		•			
	Multiple outputs		•					•	•	•			•
Mounting	Panel	•			•	•	•	•	•	•	•	•	•
	Field / wall / pipe		•	•	•	•	•	•	•	•	•	•	•
	Direct on flowmeter		•	•	•	•	•	•	•	•	•	•	•
Hazardous	Safe area	•			•	•	•	•	•	•	•	•	•
	Intrinsically safe				•	•	•	•	•	•	•	•	•
	Explosion proof - Rugged 15 Kg enclosure				•		•	•	•	•	•	•	•
	Explosion proof - touch through glass		•	•									
Other	Linearization	•	•	•	•	•	•			•			
	Multiple inputs							•	•		•	•	•
	External reset total		•	•			•						
	Modbus communication			•			•	•	•	•	•	•	•
	HART communication		•			•							
	Datalogging			•									
	Temperature / pressure Compensation										•/-	•/•	•/-

## Flow Computers

The product group “Flow Computers” offers an addition to the range of Flow rate Indicators / totalizers. It incorporates most basic and advanced features and adds smart functionality like linearization of the flow curve temperature and pressure compensation, (fuel) consumption calculation or ratio monitoring. This is one of our most advanced product ranges.

### Functionality

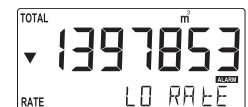
- ✓ F114: Ratio monitor / totalizer with high / low alarms and analog outputs.
- ✓ F116 / F127: Calculate differential / consumption total of two flows.
- ✓ F126 - EL: Temperature compensation for corrected liquid volume.
- ✓ F126 - EG: Temperature and pressure compensation for corrected gas volume.
- ✓ Do16/Eo18/E112/Fo16/Fo18/F112/F118: Linearization of the flow curve for accuracy in any flow range.

### Advanced features

- ✓ LED backlight ensuring perfect readings in all lighting conditions.
- ✓ HART Communication allows you to easily communicate with smart “DD enabled host” systems.
- ✓ Data logging: Logged frequently, read out easily! With free downloadable software tool.
- ✓ Intrinsically safe available for hazardous area applications.



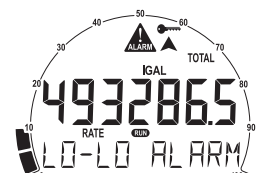
F-Series: Robust field mount Indicators



F118 display



E-Series: Explosion proof Totalizers



Eo18 display



D-Series: DIN Panel mount Indicators



Fo16 / Do16 display



		Batch Controllers								
		D030	F030	F130	F131	F132	F133	F136	N410	N413
Flow inputs	(0)4-20mA Input	●	●	●	●			●		
	Pulse Input	●	●	●	●	●	●	●	●	●
	0 - 10V DC Input	●	●	●	●			●		
Display	Preset value	●	●	●	●	●		●	●	●
	Running batch	●	●	●	●	●	●	●	●	●
	Batch process indicator								●	●
	Actual flow rate				●		●		●	●
	Actual total (resettable)	●	●	●	●	●	●	●	●	●
	Accumulated total (non-resettable)	●	●	●	●	●	●	●	●	●
	Preset and actual batch simultaneously	●	●	●	●	●		●	●	●
	LED backlight	●	●	●	●	●	●	●	●	●
Analog	According to flow rate				●					
	According to batch							●		
Digital output	Pulse output			●	●			●	●	●
	Alarm output								●	●
	1 stage batch control	●	●	●	●	●		●	●	●
	2 stage batch control			●	●	●	●	●	●	●
	Number of outputs	1	1	2	2	2	2	2	3	5
Mounting	Panel	●	●	●	●	●	●	●	●	●
	Field / wall / pipe		●	●	●	●	●	●		
Hazardous	Safe area	●	●	●	●	●	●	●	●	●
	Intrinsically safe		●	●	●	●	●	●		
	Explosion proof - Rugged 15 Kg enclosure		●	●	●	●	●	●		
Other	Receipt printer driver					●				●
	Number of remote inputs	-	-	2	2	2	2	2	5	5
	Modbus communication			●	●		●	●	●	
	Delivery controller						●			

## Batch Controllers

The product group “Batch Controllers” offers various products within the N-Series, F-Series and D-Series product ranges. The basic batch controllers for accurate dispensing of small amounts of liquids. Several options are available for more demanding batch control applications like two-stage control, user-friendly numerical keypad and receipt printing functionality. The Delivery Controller is specially designed for the delivery of unknown quantities.

### Basic features

- Key information at a glance, simultaneously showing preset and actual total with measuring units.
- Clear operator messages e.g. “press stop”.
- “Know one, know them all” configuration structure, saving time, cost and aggravation.
- Ability to process all types of flow meter signals.
- Robust enclosures, resistant to harsh weather conditions.
- Suitable for hazardous area applications with intrinsically safe and explosion proof approvals.
- Entering the preset value is a basic function, easy for every operator.
- For repeatable batches it is not required to re-enter the preset value, simply press start.
- Self-learning overrun correction for repeatable results under varying conditions.

### Advanced features

- Numerical keypad for simple and fast changing of the preset value.
- Receipt printing functionality for a printed ticket after each batch.
- Additional inputs to remotely start, pause or stop a batch.
- Graphical indication of the batch process.
- LED backlight ensuring perfect readings in all lighting conditions.
- No-flow monitoring.
- Flow rate or batch re-transmission, is offered with the analog output.
- Total re-transmission, is offered with the scaled pulse output.
- Modbus Communication.
- Intrinsically safe available for hazardous area applications.



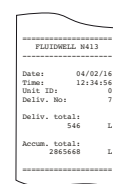
N-Series: Batch Controllers



F-Series: Robust field mount Indicators



D-Series: DIN Panel mount Indicators



Ticket example N413

## Process Controllers

The product group “Process Controllers” offers an addition to the range Flow rate Indicators / totalizers. It incorporates most basic and advanced features and adds smart functionality to control your process variables. Typical applications can be found on locations where reliable and constant process variables are required. This is one of our most advanced product ranges.

### Functionality

- ☒ Do74 / Fo74: Level / pump controller with one control output.
- ☒ F120: Flow rate controller with analog control output and digital high / low alarm outputs.
- ☒ F124: Ratio controller with analog control output and digital high / low alarm outputs.

### Advanced features

- ☒ Key information at a glance, simultaneously showing process variables and measuring units.
- ☒ Clear operator messages e.g. “alarm lo”.
- ☒ “Know one, know them all” configuration structure, saving time, cost and aggravation.
- ☒ Ability to process all types of sensor input signals.
- ☒ Intrinsically safe available for hazardous area applications.

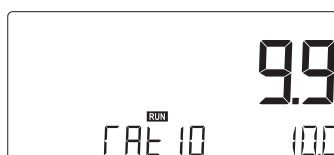
		Process Controllers			
		Do74	Fo74	F120	F124
Flow inputs	(0)4-20mA Input	•	•	•	•
	Pulse Input			•	•
	0 - 10V DC Input	•	•	•	•
Display	Level	•	•		
	Actual total (resettable)			•	
	Actual flow rate			•	•
	Ratio				•
	LED backlight	•	•	•	•
Analog	To control flow rate			•	
	To control ratio				•
Digital output	Level control output	•	•		
	Alarm output			•	•
	Multiple outputs			•	•
Mounting	Panel	•	•	•	•
	Field / wall / pipe		•	•	•
	Direct on flowmeter		•	•	•
Hazardous	Safe area	•	•	•	•
	Intrinsically safe		•	•	•
	Explosion proof - Rugged 15 Kg enclosure		•	•	•
Other	Safety input			•	•
	Dual flow inputs				•
	External reset total			•	
	Modbus communication			•	•
	Level / pump controller	•	•		
	Flow rate controller			•	
	Ratio controller				•



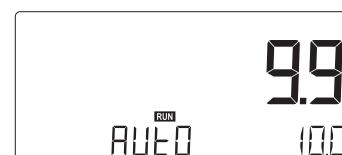
F-Series: Robust field mount Indicators



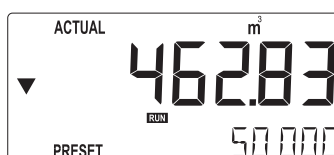
D-Series: DIN Panel mount Indicators



F124 display



F120 display



Fo74 / Do74 display



Easy menu structure

		General Purpose Displays					
		D090	F090	F093	F193	F195	F197
Input	(0)4-20mA Input	•	•				•
	Pulse Input			•		•	•
	0 - 10V DC Input						•
	Modbus communication				•		
Display	Actual value	•	•			•	
	Engine speed and running hours			•			
	Product / Tank I.D.				•		
	Valve position					•	
	Preset, process and transmitted value						•
	LED backlight	•	•	•	•	•	•
	Red flashing backlight			•			
	Pie graph indicator	•	•				
	Display with large digits	•	•				
Analog	According to value				•		•
	According to hydrolic valve position					•	
Digital output	Pulse output					•	
	Alarm output			•	•		•
	Multiple outputs				•	•	•
Mounting	Panel	•	•	•	•	•	•
	Field / wall / pipe		•	•	•	•	•
	Direct on sensor		•	•	•	•	•
Hazardous	Safe area	•	•	•	•	•	•
	Intrinsically safe		•	•	•	•	•
	Explosion proof - Rugged 15 Kg enclosure		•	•	•	•	•
Other	Loop powered indicator	•	•				
	Tachometer monitor			•			
	Dual flow inputs					•	
	Modbus communication				•	•	•

## General Purpose Displays

The product group “General Purpose Displays” offers several models which can be used for various kinds of applications. They all have the basic features in common which are typical to a Fluidwell product. The functionality of these products will vary from a basic loop powered indicator to a Modbus display with alarm, control and analog outputs.

### Functionality

- ✓ F090 / D090: Basic loop powered, general purpose indicator.
- ✓ F093: Tachometer monitor, displays engine speed and running hours with alarm output.
- ✓ F193: Modbus display with alarms, control and analog outputs.
- ✓ F195: Valve Position Indicator for hydraulic systems.
- ✓ F197: Set-point generator to manually control an analog output.

### Features

- ✓ Key information at a glance, simultaneously showing process variables and measuring units.
- ✓ Clear operator messages e.g. “alarm lo”.
- ✓ “Know one, know them all” configuration structure, saving time, cost and aggravation.
- ✓ Ability to process all types of sensor input signals.
- ✓ Robust enclosures, resistant to harsh weather conditions.
- ✓ Suitable for a wide range of applications with diverse mounting possibilities: walls, pipes, panels or directly onto outdoor sensors.
- ✓ Piegraph as graphical indication of the measured value.
- ✓ Intrinsically safe available for hazardous area applications.
- ✓ LED backlight ensuring perfect readings in all lighting conditions.



F-Series: Robust field mount Indicators



D-Series: DIN Panel mount Indicators



F090 / D090 display



F093 display

		Level Indicators									
		Do70	Do73	Do74	Do77	Fo70	Fo73	Fo74	Fo77	F170	F173
Input	(o)4-20mA Input	•	•	•	•	•	•	•	•	•	•
	Reed chain resistance input						•				
	0 - 10V DC Input	•	•	•	•	•	•	•	•	•	•
Display	Actual level	•	•	•	•	•	•	•	•	•	•
	Actual height	•	•		•	•	•		•	•	•
	Percentage filled	•	•		•	•	•		•	•	•
	Preset value			•				•			
	LED backlight	•	•	•	•	•	•	•	•	•	•
	Red flashing backlight		•		•		•		•		
	Pie graph indicator	•				•					
	Display with large digits	•				•					
Outputs	Analog output according to level									•	•
	Digital control output			•				•			
	Digital alarm output		•		•		•		•	•	•
	Multiple outputs									•	•
Mounting	Panel	•	•	•	•	•	•	•	•	•	•
	Field / wall / pipe					•	•	•	•	•	•
	Direct on sensor					•	•	•	•	•	•
Hazardous	Safe area	•	•	•	•	•	•	•	•	•	•
	Intrinsically safe					•	•	•	•	•	•
	Explosion proof - Rugged 15 Kg enclosure					•	•	•	•	•	•
Other	Linearization				•				•		•
	Modbus communication									•	•

## Level Indicators

The product group "Level Indicators" offers a range of indicators, transmitters and monitoring systems for level measurement applications. From a basic level indicator up to a powerful level monitor with tank shape linearization, high / low level monitoring, signal transmission, four alarm outputs as well as full Modbus communication.

### Basic features

- Key information at a glance, simultaneously showing level, measuring units, percentage and alarm messages.
- Clear operator messages e.g. "low level" or "alarm lo".
- "Know one, know them all" configuration structure, saving time, cost and aggravation.
- Robust enclosures, resistant to harsh weather conditions.
- Suitable for a wide range of applications with diverse mounting possibilities: walls, pipes, panels or directly onto outdoor sensors.
- The level engineering units: ml, L, m3, GAL, USGAL, kg, lb, bbl or no unit.
- The height engineering units: mm, cm, m, mtr, inch, ft, mmwk, mmwc, cmwk, cmwc, mwk, mwc, inwc, ftwc, mbar, bar, psi, percentage or no unit.

### Advanced features

- Linearization to compensate the tank shape for accurate level measurement.
- Level re-transmission, is offered with the analog output.
- Level monitoring with high/low alarm values and (multiple) digital alarm outputs.
- LED backlight ensuring perfect readings in all lighting conditions.
- Red flashing backlight in case of an alarm situation.
- Modbus Communication.
- Intrinsically safe available for hazardous area applications.
- Piegraph as graphical indication of the actual level.
- Ignore function to allow an incorrect level for a certain period.



F-Series: Robust field mount Indicators



D-Series: DIN Panel mount Indicators



Fo70 / Do70 display



Fo73 / Do73 display



		Temperature Indicators					
		Do40	Do43	Fo40	Fo43	F141	F143
Input	(o)4-20mA Input	•	•	•	•	•	•
	PT100 input			•	•		
	0 - 10V DC Input	•	•	•	•	•	•
Display	Actual temperature	•	•	•	•	•	•
	Alarm values		•		•		•
	LED backlight	•	•	•	•	•	•
	Red flashing backlight		•		•		
	Pie graph indicator	•		•			
	Display with large digits	•		•			
Outputs	Analog output acc. to temperature						•
	Digital alarm output		•		•		•
	Multiple outputs						•
Mounting	Panel	•	•	•	•	•	•
	Field / wall / pipe			•	•	•	•
	Direct on sensor			•	•	•	•
Hazardous	Safe area	•	•	•	•	•	•
	Intrinsically safe			•	•	•	•
	Explosion proof - Rugged 15 Kg enclosure			•	•	•	•
Other	Dual temperature inputs					•	
	Modbus communication					•	•

## Temperature Indicators

The product group “Temperature Indicators” offers a range of indicators, transmitters and monitoring systems for temperature measurement applications. From a basic temperature indicator up to a powerful temperature monitor with high / low level monitoring, signal transmission, four alarm outputs as well as full Modbus communication.

### Basic features

- Key information at a glance, simultaneously showing temperature, measuring units, and alarm messages.
- Clear operator messages e.g. “low temp” or “alarm lo”.
- “Know one, know them all” configuration structure, saving time, cost and aggravation.
- Robust enclosures, resistant to harsh weather conditions.
- Suitable for a wide range of applications with diverse mounting possibilities: walls, pipes, panels or directly onto outdoor sensors.
- The temperature engineering units: °C, °F, K or no unit.

### Advanced features

- Temperature re-transmission, is offered with the analog output.
- Temperature monitoring with high/low alarm values and (multiple) digital alarm outputs.
- Dual temperature monitoring.
- LED backlight ensuring perfect readings in all lighting conditions.
- Modbus Communication.
- Intrinsically safe available for hazardous area applications.
- Piegraph as graphical indication of the actual temperature.



F-Series: Robust field mount Indicators



D-Series: DIN Panel mount Indicators



Fo40 / Do40 display



Fo43 / Do43 display



F141 display



Easy menu structure

		Pressure Indicators					
		D050	D053	F050	F053	F151	F153
Input	(o)4-20mA Input	•	•	•	•	•	•
	0 - 10V DC Input	•	•	•	•	•	•
Display	Actual pressure	•	•	•	•	•	•
	Alarm values		•		•		•
	LED backlight	•	•	•	•	•	•
	Red flashing backlight		•		•		
	Pie graph indicator	•		•			
	Display with large digits	•		•			
Outputs	Analog output acc. to pressure						•
	Digital alarm output		•		•		•
	Multiple outputs						•
Mounting	Panel	•	•	•	•	•	•
	Field / wall / pipe			•	•	•	•
	Direct on sensor			•	•	•	•
Hazardous	Safe area	•	•	•	•	•	•
	Intrinsically safe			•	•	•	•
	Explosion proof - Rugged 15 Kg enclosure			•	•	•	•
Other	Dual pressure inputs					•	
	Modbus communication					•	•

## Pressure Indicators

The product group “ Pressure Indicators” offers a range of indicators, transmitters and monitoring systems for pressure measurement applications. From a basic pressure indicator up to a powerful pressure monitor with high / low level monitoring, signal transmission, four alarm outputs as well as full Modbus communication.

### Basic features

- ✓ Clear operator messages e.g. “low pressure” or “alarm lo”.
- ✓ Key information at a glance, simultaneously showing pressure, measuring units and alarm messages.
- ✓ “Know one, know them all” configuration structure, saving time, cost and aggravation.
- ✓ Robust enclosures, resistant to harsh weather conditions.
- ✓ Suitable for a wide range of applications with diverse mounting possibilities: walls, pipes, panels or directly onto outdoor sensors.
- ✓ The pressure engineering units: mbar, bar, psi or no unit.

### Advanced features

- ✓ Pressure re-transmission, is offered with the analog output.
- ✓ Pressure monitoring with high/low alarm values and (multiple) digital alarm outputs.
- ✓ Dual pressure monitoring.
- ✓ LED backlight ensuring perfect readings in all lighting conditions.
- ✓ Modbus Communication.
- ✓ Intrinsically safe available for hazardous area applications.
- ✓ Piegraph as graphical indication of the actual pressure.



F-Series: Robust field mount Indicators



D-Series: DIN Panel mount Indicators



F050 / D050 display



F053 / D053 display



F151 display



Easy menu structure

## N-Series: Batch Controllers



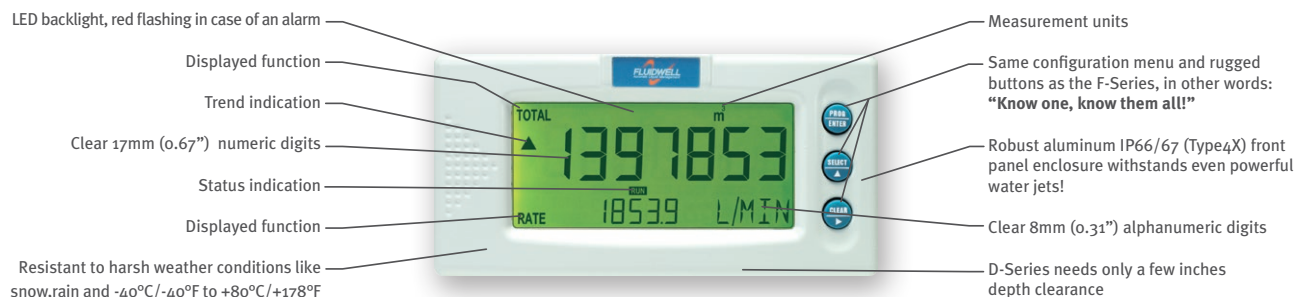
### Easy, easier, easiest!

The N-Series is a series of panel mount batch controllers. It comes with a full numerical keypad, which adds to its already high level of simplicity and user-friendliness: clear menu structure, simple DIN panel mounting enclosure and easy ticket printing. With a unique and crystal clear LCD display, it provides multiple batch control data at a glance, including a graphical indication of the batch process and the relay status. The bright backlight is standard, ensuring perfect readings day and night. The new Fluidwell N-Series takes batch controlling to a new level.

### Advantages

- ✓ Save time and cost with the easy to operate numerical keypad.
- ✓ Your crew is in control with our highly praised "Know one, know them all" configuration structure, saving time, cost and aggravation.
- ✓ Key information at a glance as the display simultaneously shows actual value, preset value, batch process indication, switch point indication and measuring units.
- ✓ Easy installation with the rugged aluminum DIN-size panel mount enclosure with only four inches depth clearance for smaller and low cost panels.

## D-Series: DIN Panel mount Indicators



### Robust and water tight!

The D-Series is available as DIN panel mount indicator, transmitter, controller and monitoring system for flow, level, pressure and temperature measurement applications in industrial environments. It is the robust alternative for your existing, not waterproof, panel meters. The unique, robust IP66, IP67 (Type4X) front enclosure makes it the perfect fit for industrial panel mount applications where working environments are often cleaned with powerful water jets.

### Advantages

- ✓ Your crew is in control with our highly praised "Know one, know them all" configuration structure, saving time, cost and aggravation.
- ✓ Resistant to harsh weather conditions (rain, snow, salty atmospheres, temperatures between -40°C/-40°F and +80°C/+178°F) without use of expensive protective cabinets.
- ✓ Unique, robust IP66, IP67 (Type4X) front enclosure made of aluminum, able to withstand total immersion and even powerful water jets!
- ✓ Only a few inches depth clearance for smaller, low cost panels and panel doors.

## F-Series: Robust field mount Indicators



### Robust and user-friendly!

The F-Series is a robust range of field mount indicators, controllers and monitoring systems for flow, level, pressure and temperature measurement in industrial environments. It is so rugged, you can even stand on it!

Once familiar with an F-Series product, you can program ALL models in ALL series without a manual: "know one, know them all". The F-Series is your first and best choice for field mount indicators in safe and hazardous area applications. Especially in harsh weather conditions like rain, snow, salty atmospheres and temperatures between -40°C up to +80°C (-40°F up to 176°F).

### Advantages

- Robust IP67 (NEMA4X) field enclosure. It is so rugged, you can even stand on it!
- Intrinsically Safe available with ATEX, IECEx, FM and CSA approvals for gas and dust applications.
- Your crew is in control with our highly praised "Know one, know them all" configuration structure, saving time, cost and aggravation.
- Suitable for a wide range of applications with diverse mounting possibilities: walls, pipes, panels or directly onto outdoor sensors!
- Resistant to harsh weather conditions (rain, snow, salty atmospheres, temperatures between -40°C/-40°F and +80°C/+178°F) without use of expensive protective cabinets.

## E-Series: Explosion proof Totalizers



### Explosion proof to the max!

Fluidwell brings the first explosion-proof flow rate indicator / totalizer to the market that saves you time, money and hassle. Our E-Series flow computers are completely designed to deliver accurate measurement while withstanding the harshest conditions and bringing you ease of use. With touch screen control, opening covers is history, saving you the time and trouble of processing work permits or even (partial) plant shutdown. This unequalled flow master delivers results, fast and easy.

### Advantages

- Save time and gain flexibility with the easy-to-operate through glass keypad: no need to remove the front cover anymore!
- Your crew is in control with our highly praised "Know one, know them all" configuration structure, saving time, cost and aggravation.
- Key information at a glance as the display shows flow rate, total, measuring units and a flow rate indicating speedometer.
- Durable high grade stainless steel 316L Ex d enclosure for extremely salty atmospheres (offshore).